

• AMSTERDAM •

Amsterdam PT and Hydraulic Systems B.V.



## Verzinkt Gegolfd Kanalen Voor Post-Pre Spannen Systemen

Galvanized Corrugated Ducts  
for Post-Pre Tensioning Systems



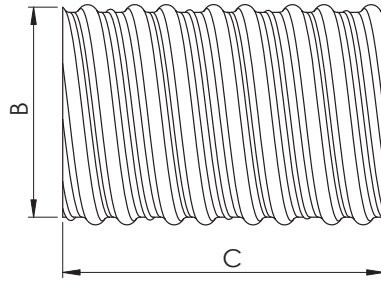
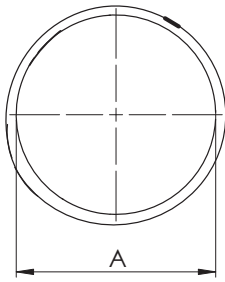




The standard length of the Amsterdam PT Galvanized Corrugated Ducts are 5.70 or 6.00 meters and they are connected to each other with the Galvanized Corrugated Duct Connectors which are supplied by AMSTERDAM PT additionally. During the connection, alloy tapes which are resistant to possible external effects should be used. Usage of alloy tapes are extremely important to provide required environment for correct application.

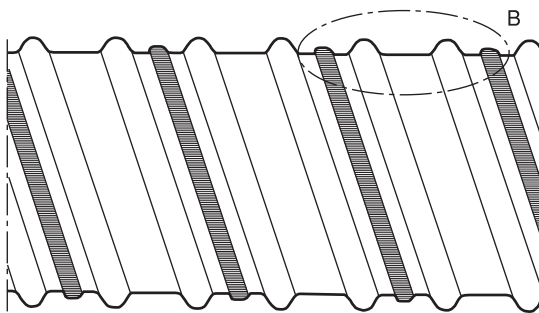
Location of the Galvanized Corrugated Ducts specified above is very important, installation of them are carried out together with the installation of iron blocks. Carefully prepared and positioned stirrups (a "winding wrap" obtained by bending construction steel that goes around the longitudinal fittings of the supporting system elements such as columns and beams in reinforced concrete structures) are used to make the placement precisely at the exact coordinates which stated in the related project. During installation, it is recommended to make a marking with chalk to confirm that the placement is absolutely correct. Then, the stirrups on which the ducts will sit, are precisely positioned and firmly mounted onto the equipment.

The gaps through which the ducts will pass must be of the exact dimensions specified in the project. Protective elastic material should temporarily be placed at the contact points in order to prevent any damage to the ducts during the installation process. Afterwards, holes are drilled at the points of the ducts as specified in the project, and AMSTERDAM Vent Covers are inserted into the upper parts of these holes and then sealed with alloy tapes in order to make sure that there will be no leakage whatsoever. Finally, the AMSTERDAM Injection Pipes are mounted on the upper part of these Vent Covers and then, they are cut, so they extend a minimum 20 cm from the upper part of the beam. Once this is done, a AMSTERDAM Injection Valve is inserted onto the outer end of the Injection Pipe that is projecting out of the beam.



Number of Strands		4	7	9	12	15	19	22	27	31
<b>GALVANIZED CORRUGATED DUCT</b>										
A	Internal Dia. Ø(mm)	Ø 45	Ø 55	Ø 70	Ø 80	Ø 90	Ø 95	Ø 110	Ø 115	Ø 120
B	External Dia. Ø(mm)	Ø 50	Ø 60	Ø 75	Ø 85	Ø 95	Ø 100	Ø 115	Ø 120	Ø 125
C	mt	5,70	5,70	5,70	5,70	5,70	5,70	5,70	5,70	5,70
THICKNESS	mm	0,40	0,40	0,40	0,40	0,40	0,40	0,40	0,40	0,40
<b>GALVANIZED CORRUGATED CONNECTOR</b>										
A	Ø(mm)	Ø 50	Ø 60	Ø 75	Ø 85	Ø 95	Ø 100	Ø 115	Ø 120	Ø 125
B	Ø(mm)	Ø 55	Ø 65	Ø 80	Ø 90	Ø 100	Ø 105	Ø 120	Ø 125	Ø 130
C	mm	300	300	300	300	300	300	300	300	300
THICKNESS	mm	0,40	0,40	0,40	0,40	0,40	0,40	0,40	0,40	0,40

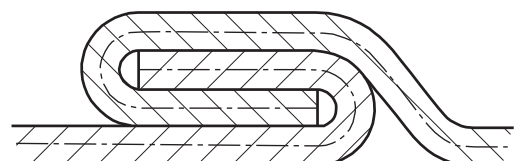
Detail: A



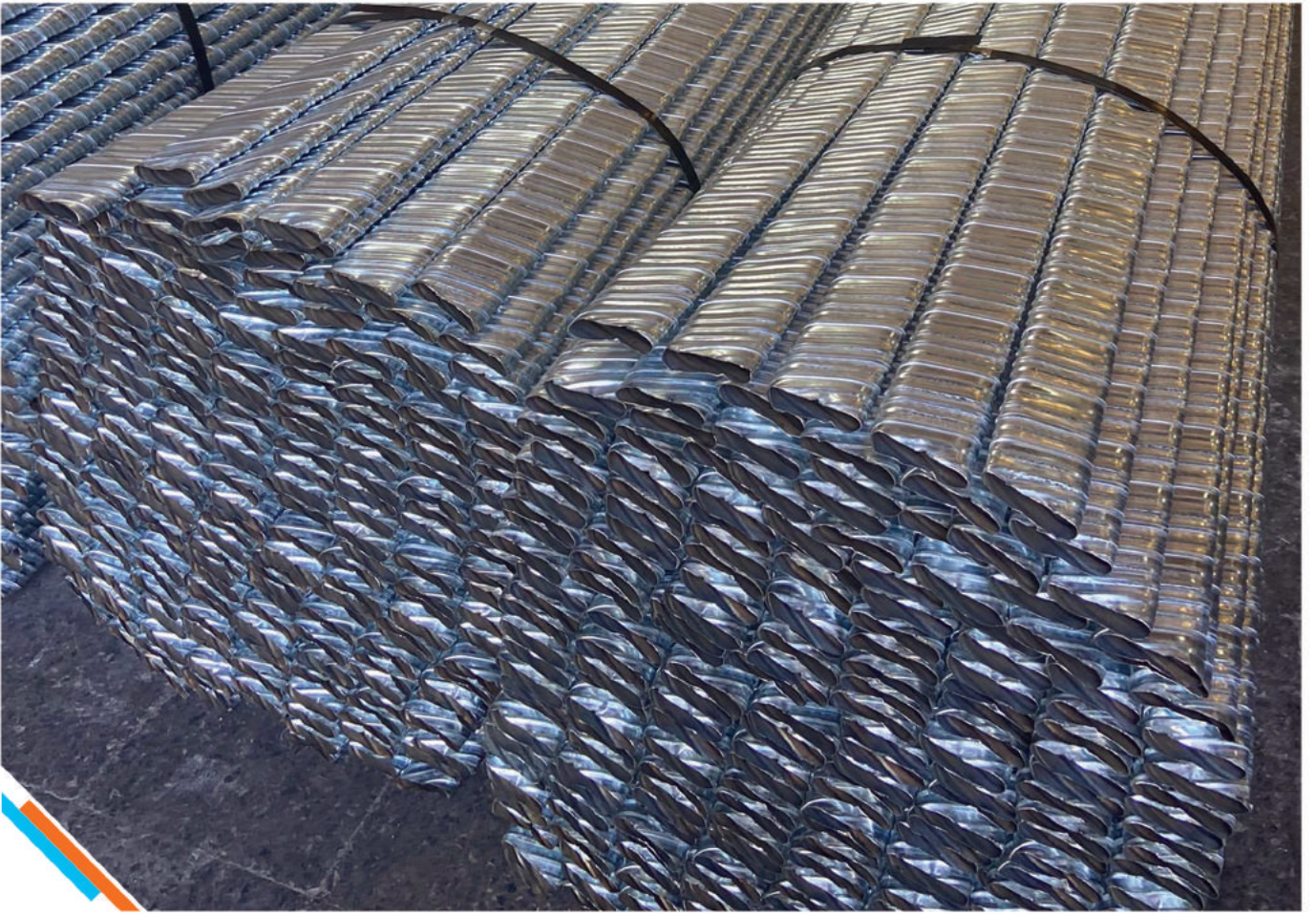
Detail: B



Detail: C













Model	Product Description	Order Number
GSP-4.4	Galvanized Corrugated Duct 45 x 50 - 0,40 / Length : 5,70 mt	GCD4.4550-40.00
GSP-4.4M-30	Galvanized Corrugated connector 50 x 55 - 0,40 / Length : 0,30 mt	GCD4.5055-40.03
GSP-4.4M-40	Galvanized Corrugated connector 50 x 55 - 0,40 / Length : 0,40 mt	GCD4.5055-40.04
GSP-4.4M-50	Galvanized Corrugated connector 50 x 55 - 0,40 / Length : 0,50 mt	GCD4.5055-40.05

GSP-7.4	Galvanized Corrugated Duct 55 x 60 - 0,40 / Length : 5,70 mt	GCD7.5560-40.00
GSP-7.4M-30	Galvanized Corrugated connector 60 x 65 - 0,40 / Length : 0,30 mt	GCD7.6065-40.03
GSP-7.4M-40	Galvanized Corrugated connector 60 x 65 - 0,40 / Length : 0,40 mt	GCD7.6065-40.04
GSP-7.4M-50	Galvanized Corrugated connector 60 x 65 - 0,40 / Length : 0,50 mt	GCD7.6065-40.05

GSP-9.4	Galvanized Corrugated Duct 70 x 75 - 0,40 / Length : 5,70 mt	GCD9.7075-40.00
GSP-9.4M-30	Galvanized Corrugated connector 75 x 80 - 0,40 / Length : 0,30 mt	GCD9.7580-40.03
GSP-9.4M-40	Galvanized Corrugated connector 75 x 80 - 0,40 / Length : 0,40 mt	GCD9.7580-40.04
GSP-9.4M-50	Galvanized Corrugated connector 75 x 80 - 0,40 / Length : 0,50 mt	GCD9.7580-40.05

GSP-12.4	Galvanized Corrugated Duct 80 x 85 - 0,40 / Length : 5,70 mt	GCD12.8085-40.00
GSP-12.4M-30	Galvanized Corrugated connector 85 x 90 - 0,40 / Length : 0,30 mt	GCD12.8590-40.03
GSP-12.4M-40	Galvanized Corrugated connector 85 x 90 - 0,40 / Length : 0,40 mt	GCD12.8590-40.04
GSP-12.4M-50	Galvanized Corrugated connector 85 x 90 - 0,40 / Length : 0,50 mt	GCD12.8590-40.05

GSP-15.4	Galvanized Corrugated Duct 90 x 95 - 0,40 / Length : 5,70 mt	GCD15.9095-40.00
GSP-15.4M-30	Galvanized Corrugated connector 95 x 100 - 0,40 / Length : 0,30 mt	GCD15.95100-40.03
GSP-15.4M-40	Galvanized Corrugated connector 95 x 100 - 0,40 / Length : 0,40 mt	GCD15.95100-40.04
GSP-15.4M-50	Galvanized Corrugated connector 95 x 100 - 0,40 / Length : 0,50 mt	GCD15.95100-40.05



ETA 22/0572  
EAD 160004-00-0301

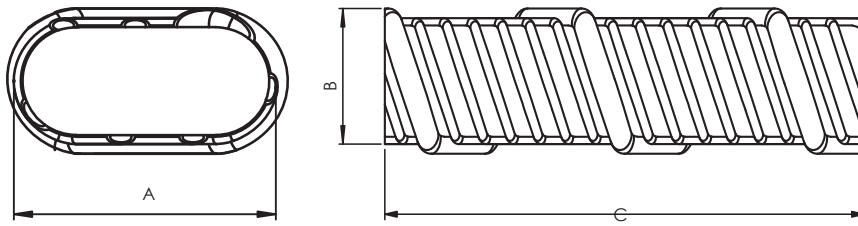
Model	Product Description	Order Number
GSP-19.4	Galvanized Corrugated Duct 95 x 100 - 0,40 / Length : 5,70 mt	GCD19.95100-40.00
GSP-19.4M-30	Galvanized Corrugated connector 100 x 105 - 0,40 / Length : 0,30 mt	GCD19.100105-40.03
GSP-19.4M-40	Galvanized Corrugated connector 100 x 105 - 0,40 / Length : 0,40 mt	GCD19.100105-40.04
GSP-19.4M-50	Galvanized Corrugated connector 100 x 105 - 0,40 / Length : 0,50 mt	GCD19.100105-40.05

GSP-22.4	Galvanized Corrugated Duct 110 x 115 - 0,40 / Length : 5,70 mt	GCD22.110115-40.00
GSP-22.4M-30	Galvanized Corrugated connector 115 x 120 - 0,40 / Length : 0,30 mt	GCD22.115120-40.03
GSP-22.4M-40	Galvanized Corrugated connector 115 x 120 - 0,40 / Length : 0,40 mt	GCD22.115120-40.04
GSP-22.4M-50	Galvanized Corrugated connector 115 x 120 - 0,40 / Length : 0,50 mt	GCD22.115120-40.05

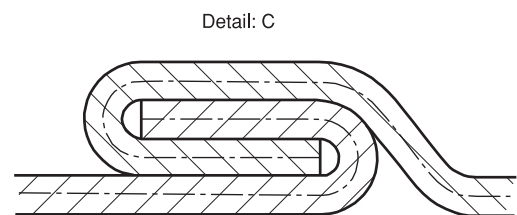
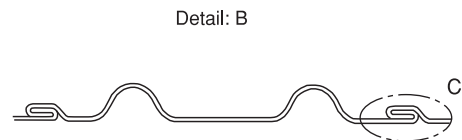
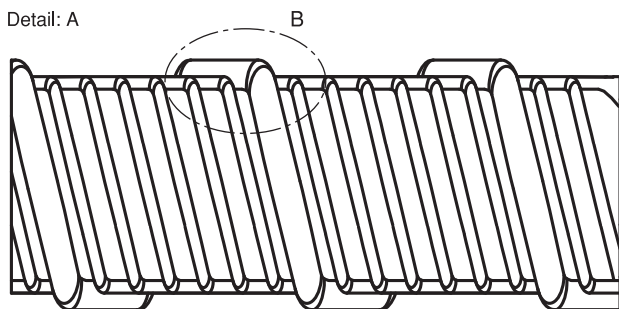
GSP-27.4	Galvanized Corrugated Duct 115 x 120 - 0,40 / Length : 5,70 mt	GCD27.115120-40.00
GSP-27.4M-30	Galvanized Corrugated connector 120 x 125 - 0,40 / Length : 0,30 mt	GCD27.120125-40.03
GSP-27.4M-40	Galvanized Corrugated connector 120 x 125 - 0,40 / Length : 0,40 mt	GCD27.120125-40.04
GSP-22.4M-50	Galvanized Corrugated connector 120 x 125 - 0,40 / Length : 0,50 mt	GCD27.120125-40.05

GSP-31.4	Galvanized Corrugated Duct 120 x 125 - 0,40 / Length : 5,70 mt	GCD31.120125-40.00
GSP-31.4M-30	Galvanized Corrugated connector 125 x 130 - 0,40 / Length : 0,30 mt	GCD31.125130-40.03
GSP-31.4M-40	Galvanized Corrugated connector 125 x 130 - 0,40 / Length : 0,40 mt	GCD31.125130-40.04
GSP-31.4M-50	Galvanized Corrugated connector 125 x 130 - 0,40 / Length : 0,50 mt	GCD31.125130-40.05





Number of Strands		2	3	4	5
GALVANIZED CORRUGATED DUCT					
A	Internal Dia. (mm)	50	60	70	80
B	External Dia. (mm)	20	20	20	20
C	mt	6	6	6	6
THICKNESS	mm	0,40	0,40	0,40	0,40
GALVANIZED CORRUGATED CONNECTOR					
A	(mm)	60	70	80	90
B	(mm)	30	30	30	30
C	mm	300	300	300	300
THICKNESS	mm	0,40	0,40	0,40	0,40





**Properties of the Galvanized Corrugated Ducts**

Galvanized corrugated ducts are tested according to EN 523 standard. Galvanized Corrugated Ducts are meet the standard requirements.

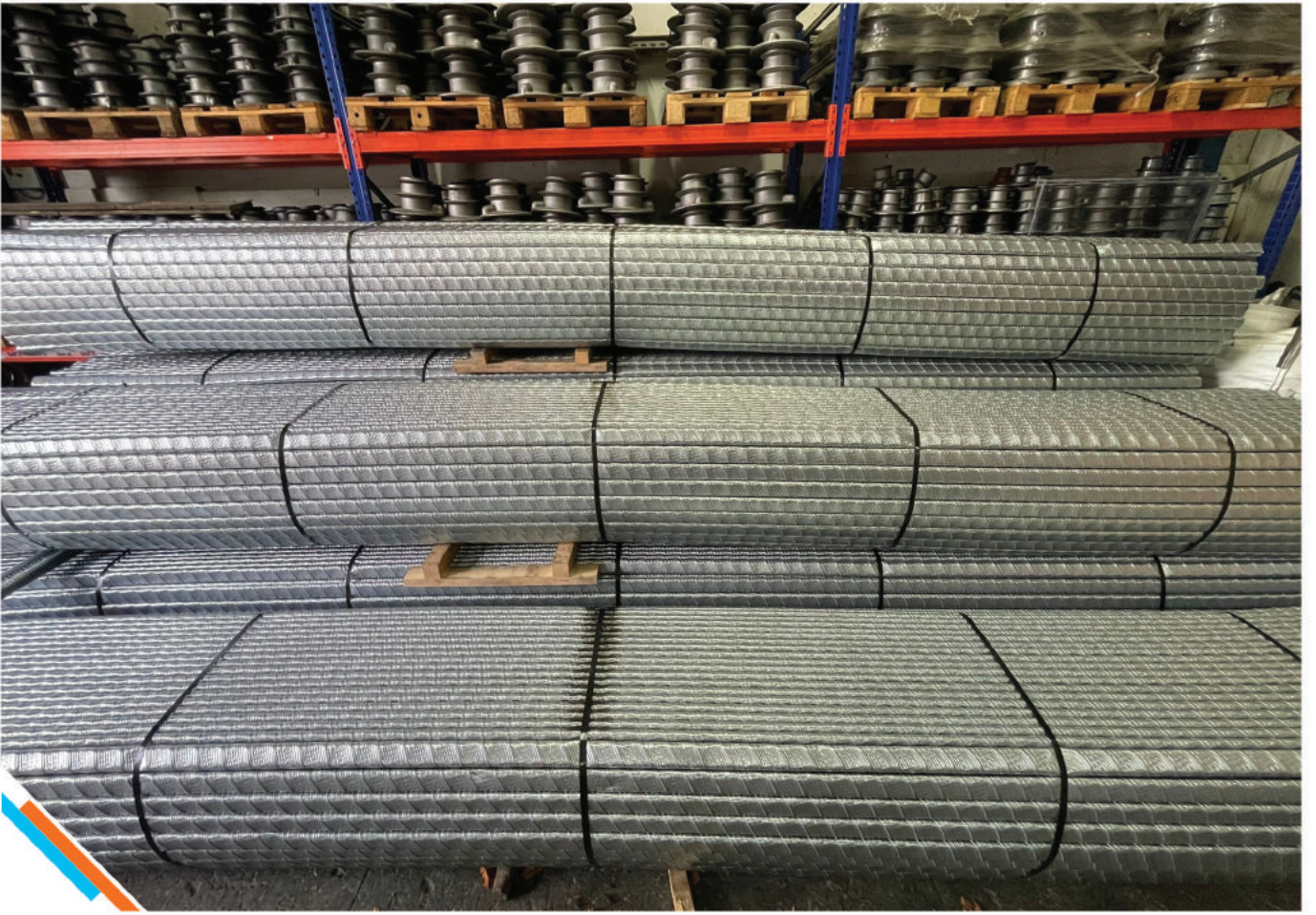
According to EAD 160004-00-0301 standard, Factory Production Control is carried out continuously.

Amsterdam PT is supplier of Galvanized Corrugated Ducts at high level quality by taking into account quality priority.

Tested Properties of Steel Strip Sheats (Galvanized Corrugated Ducts and Connectors)	Test Standard
Determination of Shape And Dimension	EN 524-1
Determination of Flexural Behaviour	EN 524-2
To-and-fro Bending Test	EN 524-3
Determination of Lateral Load Resistance	EN 524-4
Determination of Tensile Load Resistance	EN 524-5













# • AMSTERDAM •

Amsterdam PT and Hydraulic Systems B.V.

Amsterdam PT and Hydraulic Systems B.V.  
Gustav Mahlerplein 2 1082MA Amsterdam Netherlands  
[info@amsterdamppt.com](mailto:info@amsterdamppt.com) • [www.amsterdamppt.com](http://www.amsterdamppt.com)